

How to Setup

TP-Link WR740N Router for WAD Servers



TABLE OF CONTENTS

0. Introduction

1. How to setup the TP-Link WR740N Router

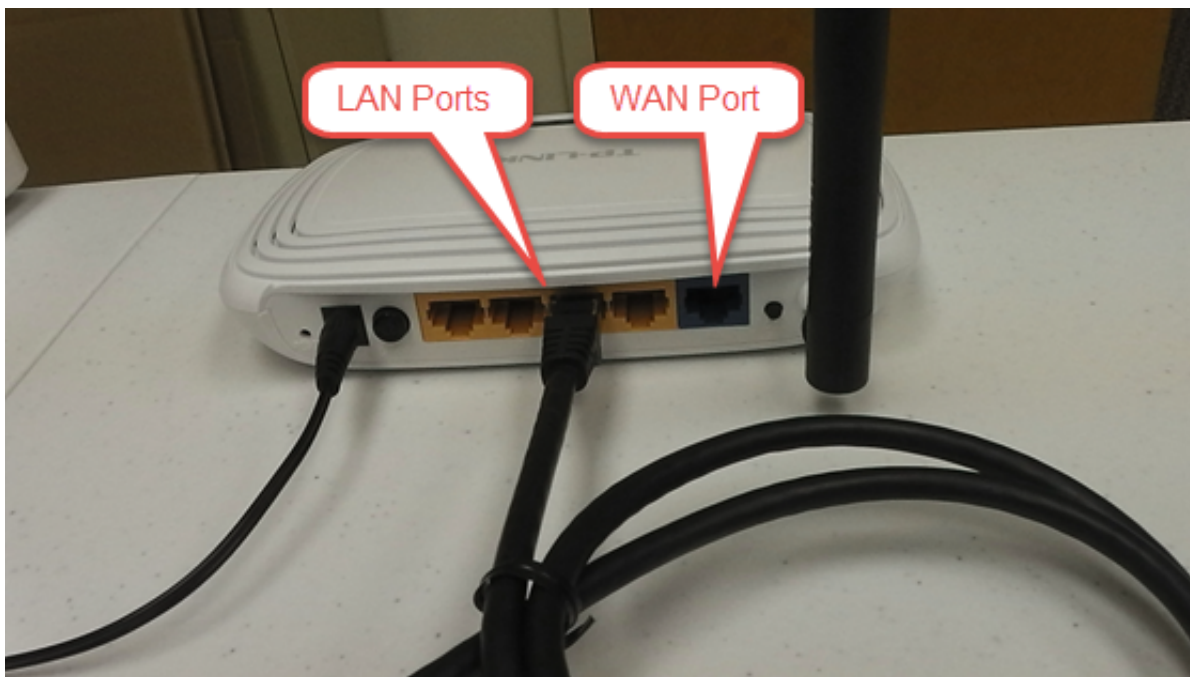
0. Introduction

TP-Link WR740N (TPL 740N) is a home router with a built-in DHCP server. It can only work as a router, not as an access point, and it is one of the most economical routers in the market today. It is a everyday standard router capable of handling 100 Mbps LAN connection and 802.11n Wireless transmission. It is a perfect unit to pair with WAD-104 for home where the logins will be limited to 5 customers or less. For WAD-110 and WAD-120, the TPL 740N can only be connected when the DHCP server inside the WAD unit is disabled. Nonetheless for the WAD-110 or WAD-120 units, where many customer logins are expected, TPL 740N is not recommended. For more detail description of the router, please refer to [TP-Link WR740N](#).

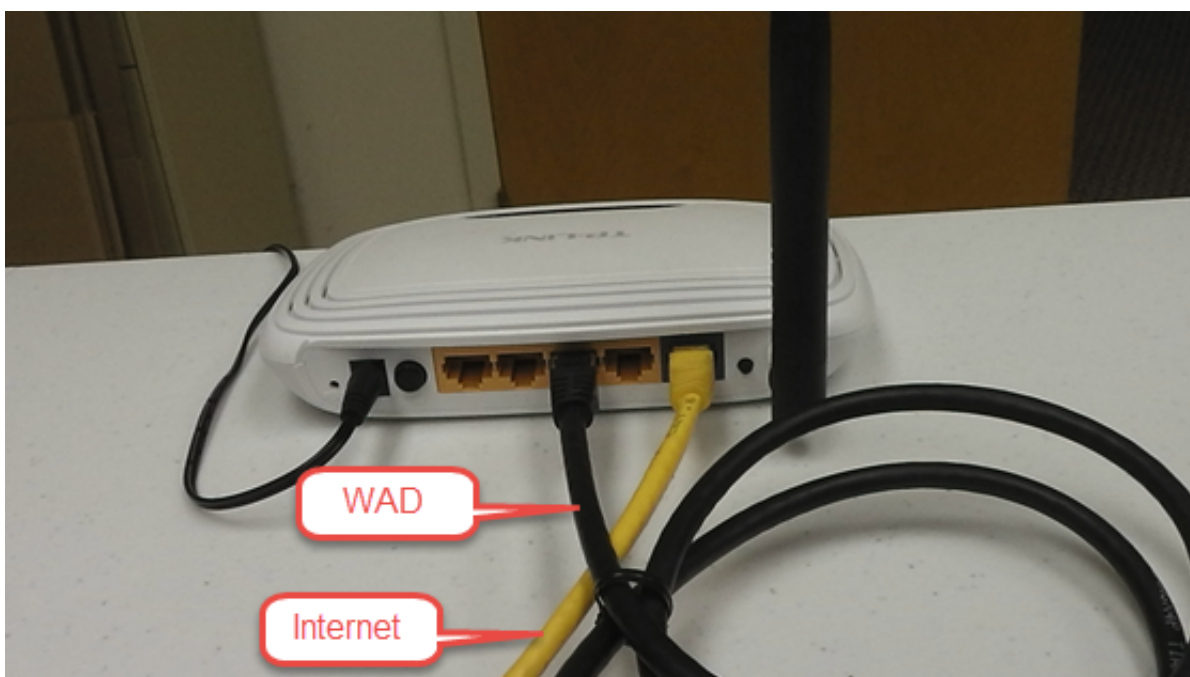
There is no need to change the default configuration of the TPL 740N router for use with WAD units. For changes needed in the WAD-110 and WAD-120 units, please refer to the USER MANUAL of the WAD units. The TPL 740 is also strictly a NON-POE router that comes with its own power adapter.

1. How to setup the ZF 7372 with the DHCP server enabled.

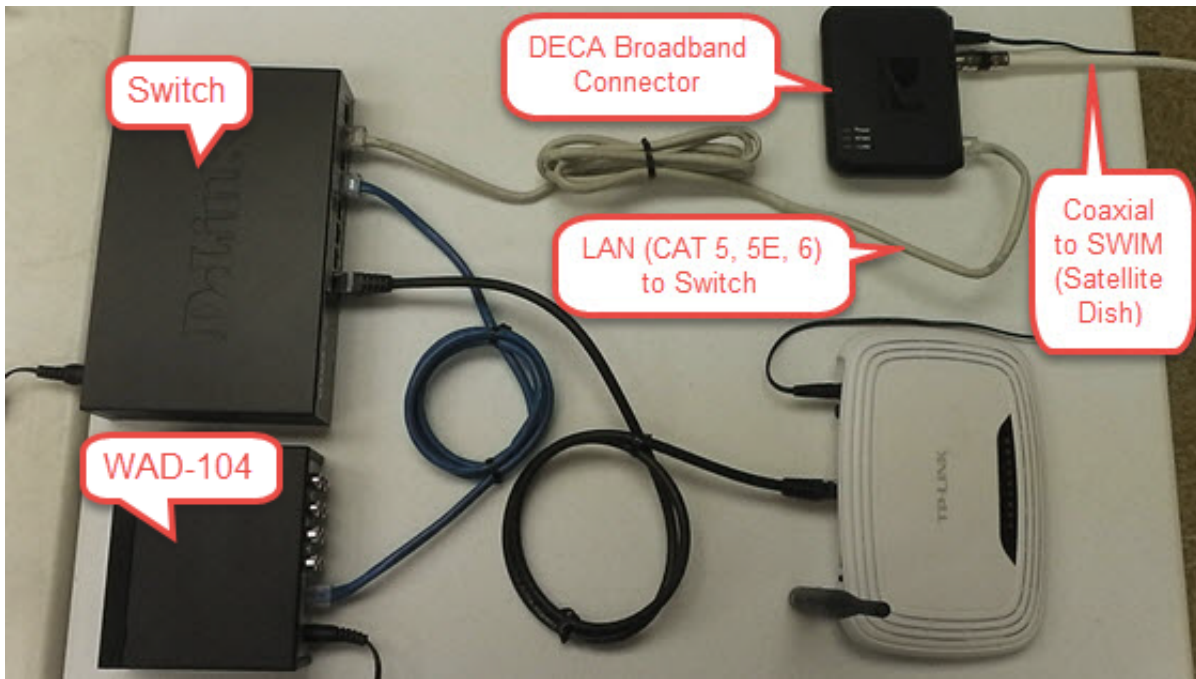
Connect the LAN cable from the WAD unit to any one of the four LAN ports in the TPL 740N. Be sure to avoid connecting the WAN port.



For Internet, connect the Internet LAN cable to the WAN port of the TPL 740N. Customers who login to the TPL 740N to listen to the audio will now be able to surf the Internet.



For Auto Channel Naming, connect DECA Broadband Connector as follows. Here we demonstrate using the WAD-104 and a Switch.



Note that the LAN cable coming from the DECA Broadband Connector to the Switch can be re-routed to connect from the DECA Broadband Connector to any one of the LAN ports in the TPL 740N.

END